

DRAWING NUMBER
50/90

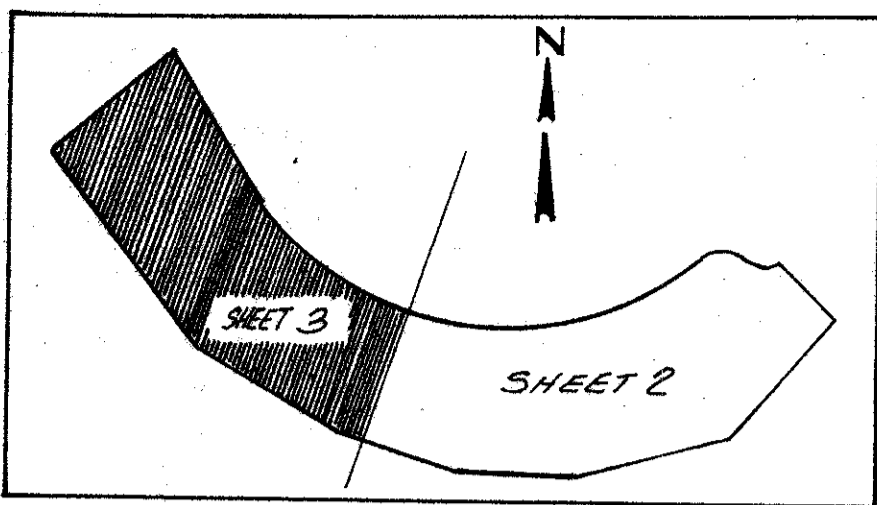
90

BOCA DELRAY PARCEL B

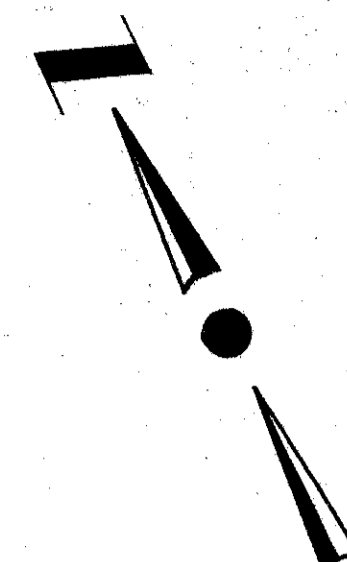
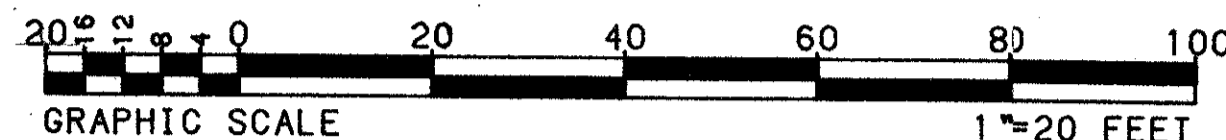
A REPLAT OF A PORTION OF PARCEL B OF "BOCA DELRAY, A P.U.D." AS RECORDED IN PLAT BOOK 44 AT PAGES 22 THRU 28 INCLUSIVE OF THE PUBLIC RECORDS OF PALM BEACH COUNTY, FLORIDA, SITUATED IN SECTION 26, TOWNSHIP 46 SOUTH, RANGE 42 EAST, PALM BEACH COUNTY, FLORIDA.

JUNE, 1984

SHEET 3 OF 3 SHEETS



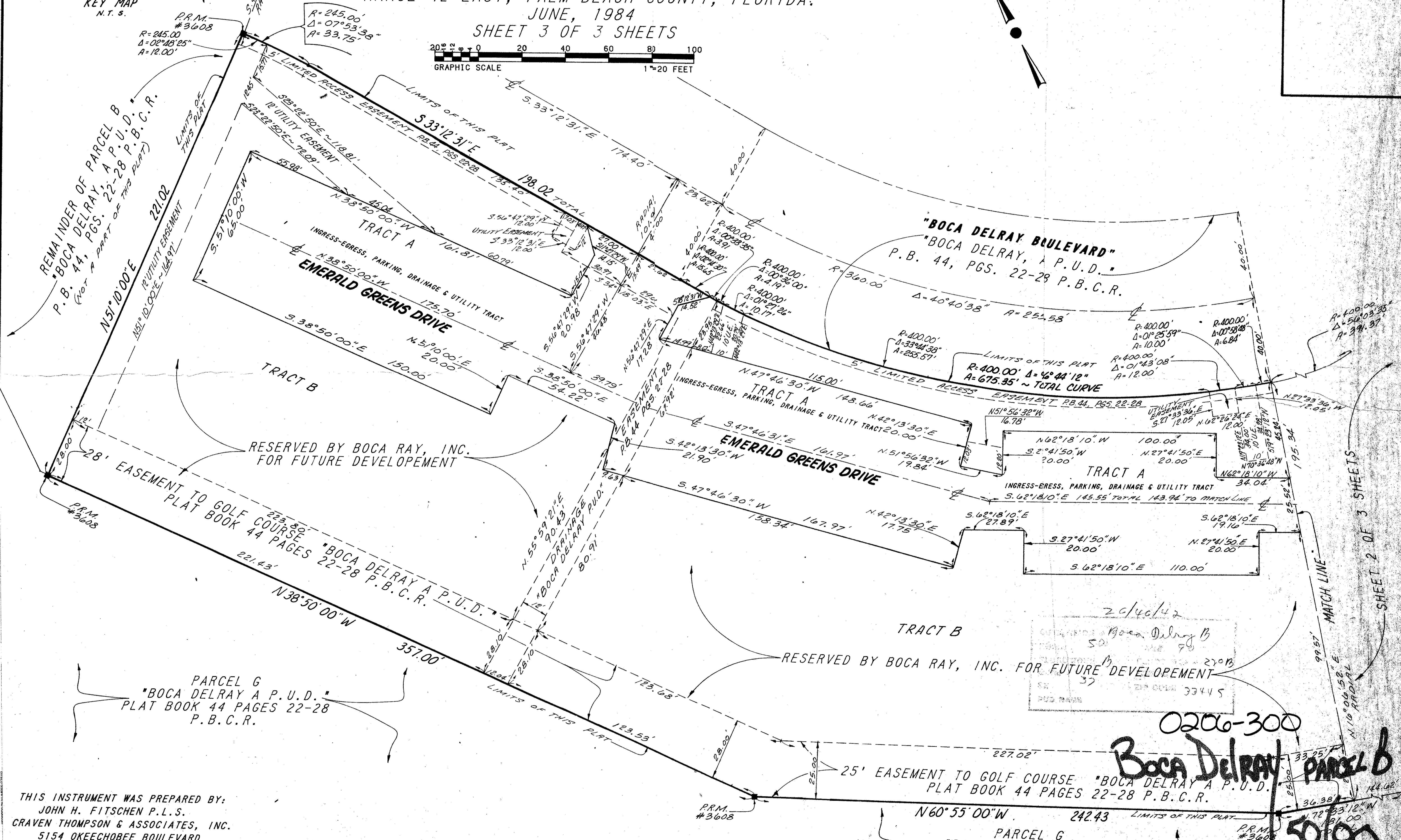
KEY MAP
N.T.S.



DRAWING NUMBER

DRAWING NUMBER

DRAWING NUMBER



THIS INSTRUMENT WAS PREPARED BY:
JOHN H. FITSCHEN P.L.S.
CRAVEN THOMPSON & ASSOCIATES, INC.
5154 OKEECHOBEE BOULEVARD
WEST PALM BEACH, FLORIDA 33409

25' EASEMENT TO GOLF COURSE "BOCA DELRAY A P.U.D." PLAT BOOK 44 PAGES 22-28 P.B.C.R.

PARCEL G "BOCA DELRAY A P.U.D." PLAT BOOK 44 PAGES 22-28 P.B.C.R.

Boca Delray Parcel B
02006-300
SHEET 3 OF 3 SHEETS
50/90

SHEET 2 OF 3 SHEETS

SHEET 3 OF 3 SHEETS